

PRESSED TIN PANELS

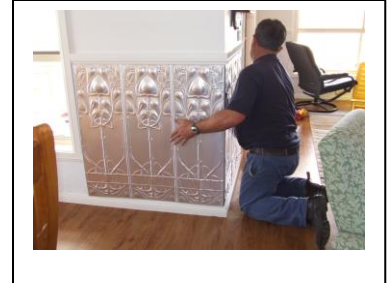
PRESSED METAL FOR WALLS & CEILINGS ILLUSTRATIONS OF VERTICAL WALL PATTERN



Showing marking out prior to installing



Marked out panel cut out for A/C vent



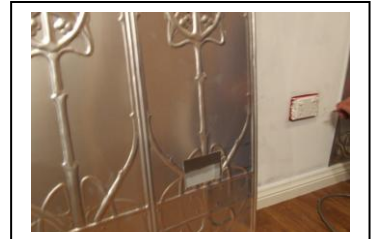
Panel folded returning around wall



Showing how sheet can be folded simply
Using a straight edge



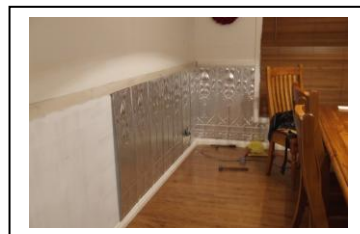
Show's nail holding in place temporarily
prior to permanent fixing.



Cutout section for power points etc



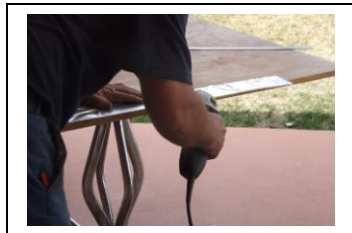
Installed panel with corner & cutouts



Panels being installed as shown



Shows panel with small infill section



One way to cut infill sections out



Shows completed wall. Prior to Painting



All items are shown as a guide only. Pressed Tin Panels do not carry any responsibility for how individual panels are installed. If you have any questions please feel free to contact us. 02 6332 1738 or 0419 414 267. Panel shown is the Art Nouveau. Guide is for any Panels being fixed to Walls only.

www.pressedtinpanels.com

For our full range and product information please contact your local distributor: